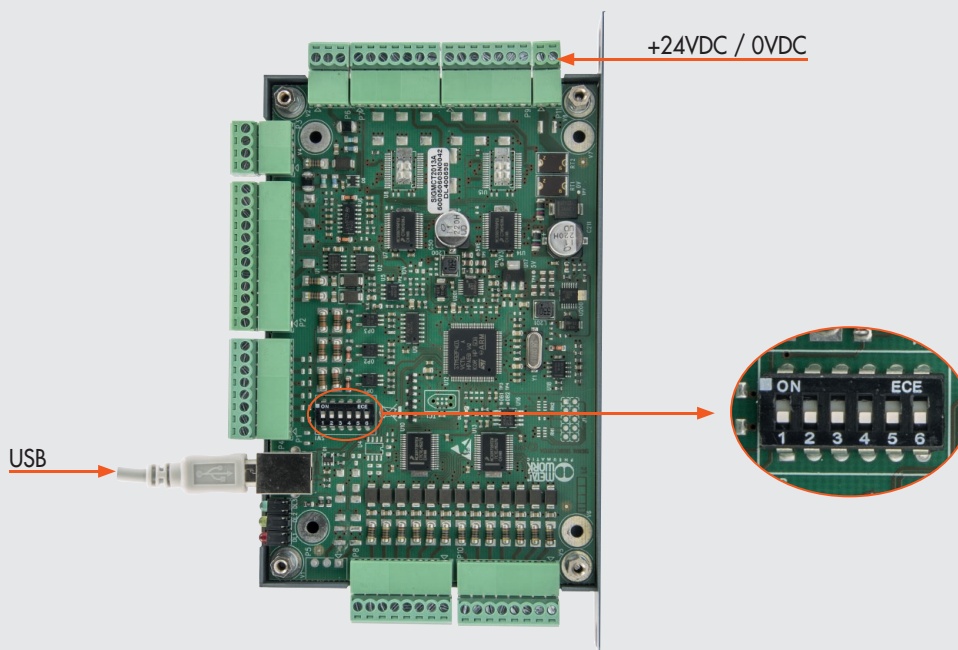


e.motion **PROCEDURA AGGIORNAMENTO FIRMWARE**
e.motion **FIRMWARE UPDATING PROCEDURE**

1. Per aggiornare il firmware e.motion è necessario togliere l'alimentazione elettrica alla scheda, rimuovere il coperchio e posizionare il dip switch 5 su ON. Collegare la scheda al PC mediante il cavo USB.

1. In order to perform the "firmware updating" it is necessary to switch off the board, open the e.motion case, move the PIN 5 to ON and connect the cable to the PC as shown in the following photos.



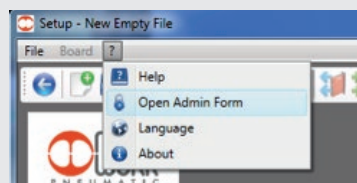
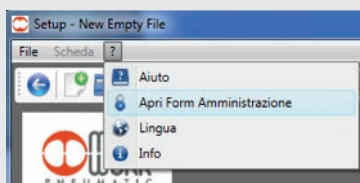
2. Alimentare la scheda. Avviare il software MWPOS già installato ed entrare nella maschera "SETUP".

2. Switch on the board. Run MWPOS already installed and select "SETUP".

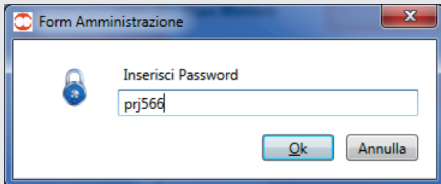


3. Dal menù "?" selezionare la voce "Apri Form Amministrazione".

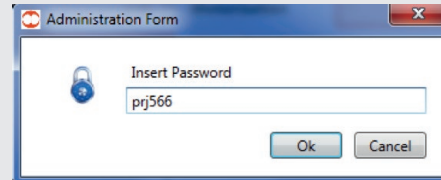
3. From menu "?" select "Open Admin Form".



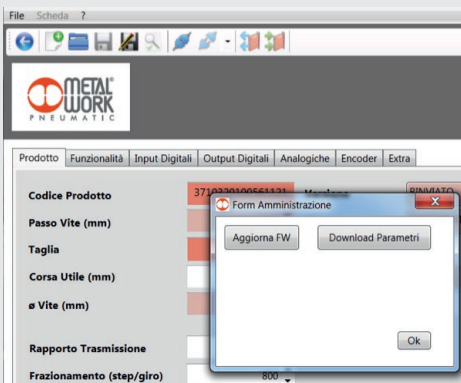
4. Inserire la password: "prj566" e premere "Ok".



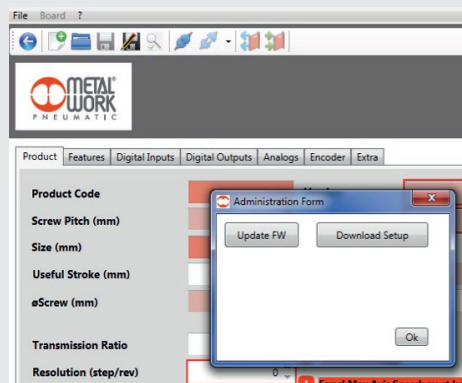
4. Insert the password: "prj566" then click "Ok".



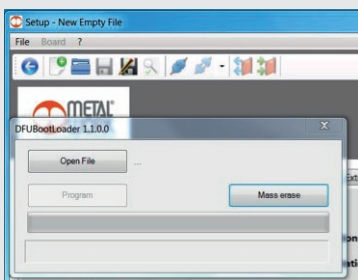
5. Selezionare "Aggiorna FW".



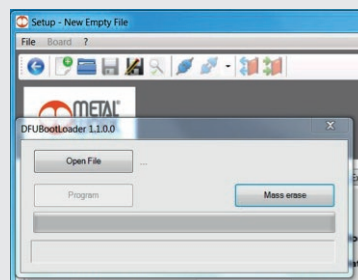
5. Select "Update FW".



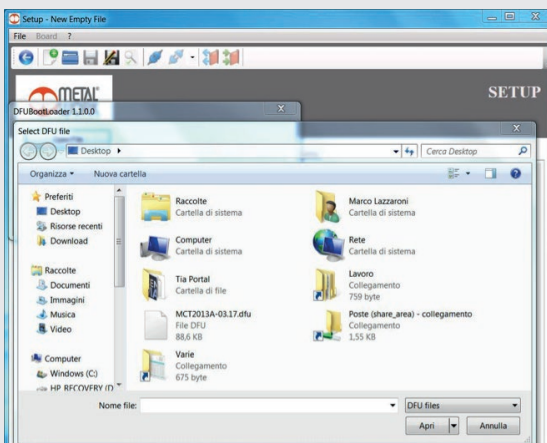
6. Selezionare "Open File".



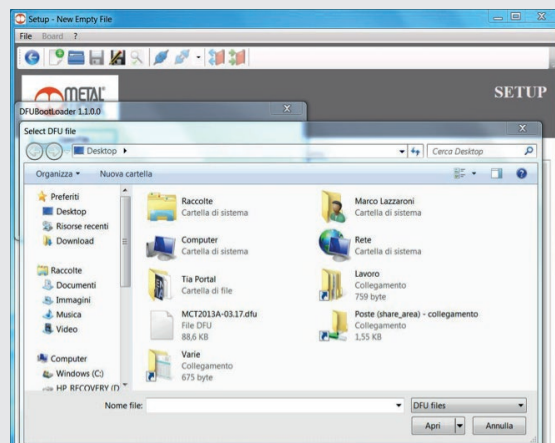
6. Select "Open file".



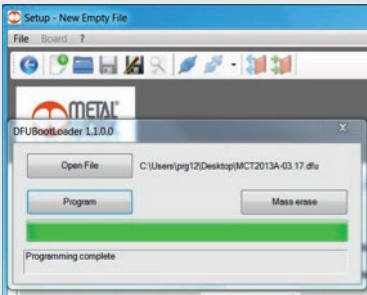
7. Selezionare mediante il browser il file .DFU contenente l'aggiornamento da installare. Il file è del tipo .DFU



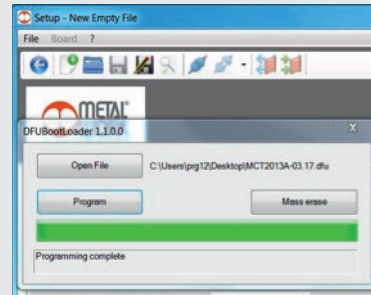
7. Select with the browser the file .DFU containing the updating. The file is .DFU type.



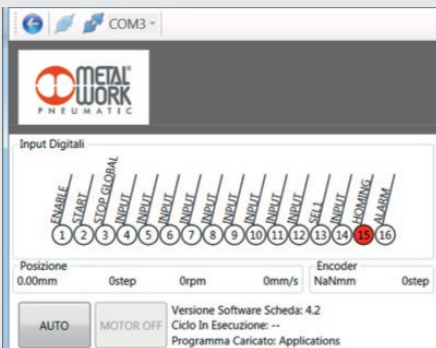
- Selezionare la voce "Program" ed attendere fino a completamento dell'aggiornamento: la barra di avanzamento diventa completamente verde e appare la scritta "Programming complete". In caso di anomalia ripetere la procedura ed eventualmente contattare Metal Work.



- Select "Program" and wait until the loading bar is totally green and "Programming complete" appears below the bar. If something goes wrong please try again and, in case, contact Metal Work.



- Togliere l'alimentazione elettrica, ripristinare il PIN 5 in posizione OFF, richiudere la scheda e alimentarla nuovamente. Eseguire il software MWPOS e verificare nella maschera "TEST JOG" che la "Versione Software Scheda" corrisponda a quella appena aggiornata.



- Switch off the board, put the PIN 5 to OFF, close the case. Switch on again the board, run MWPOS and verify in the "TEST JOG" menu that "Board Software Version" is the required one.

